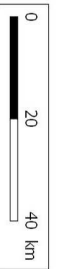
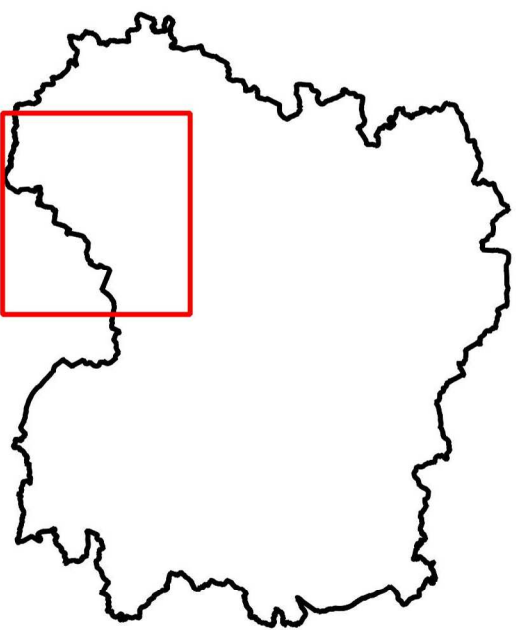


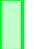










# SAS BRIFFONTAINES

## LOCALISATION DES ZONES ENVIRONNEMENTALES



### Légende :

#### Zones environnementales :

-  Natura 2000 ZSC
  -  Natura 2000 ZPS
  -  ZNIEFF de Type 1
  -  ZNIEFF de Type 2
  -  ZICO
  -  SAGE
- #### Aptitude des parcelles :
-  Apte
  -  Hydromorphe
  -  Exclu cours d'eau (cours d'eau 35 m et habitations 50 m)
  -  Exclu (cours d'eau 10 m et habitations 15 m)
  -  Exclu (bande enherbée)

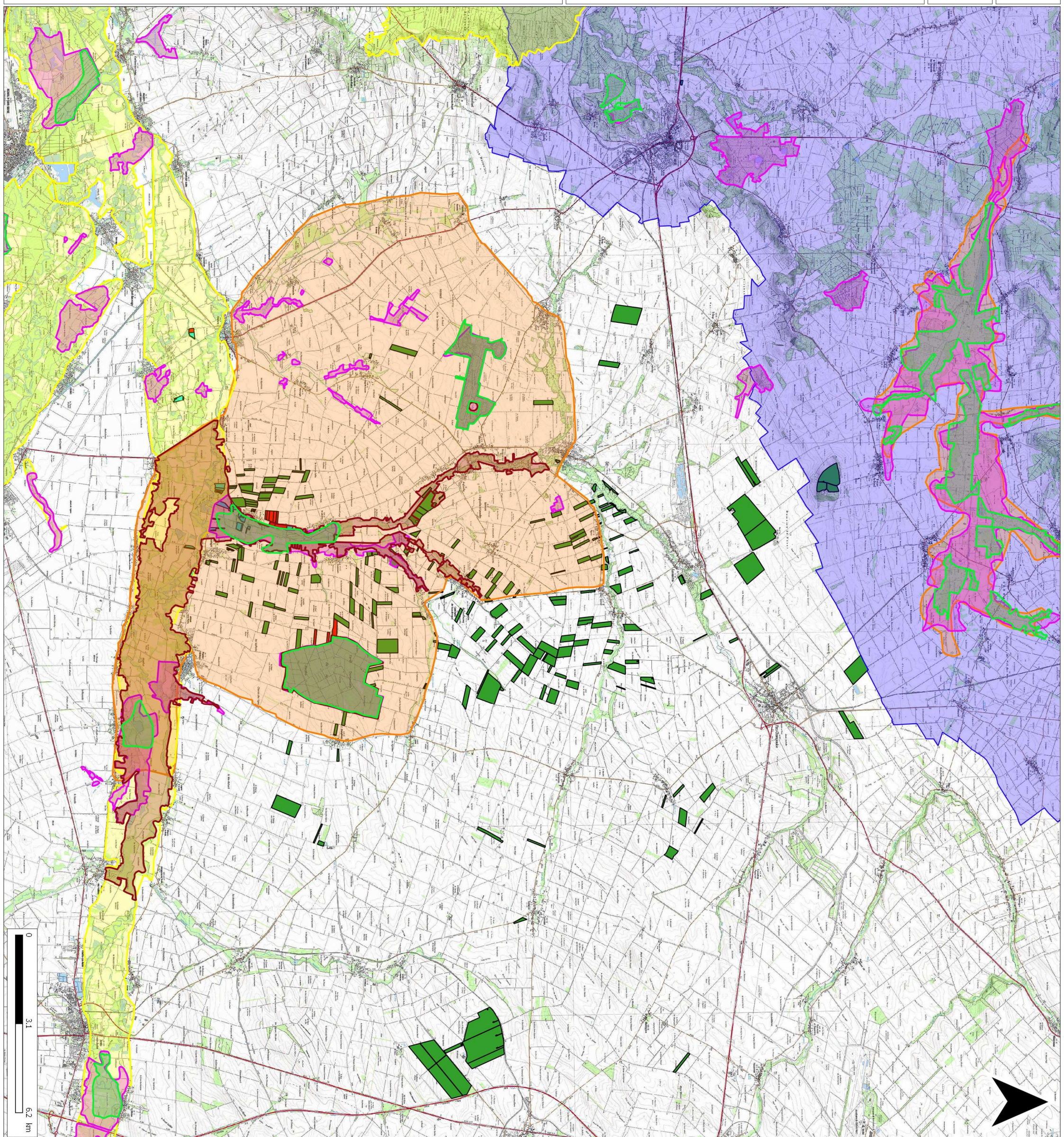


Source : IGN Scan 25 2013

Dossier :  
S:\Cartes MapInfo\Etude collaborateurs\Etude Francois\Briffontaines

Référent : brissonj51d

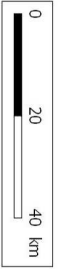
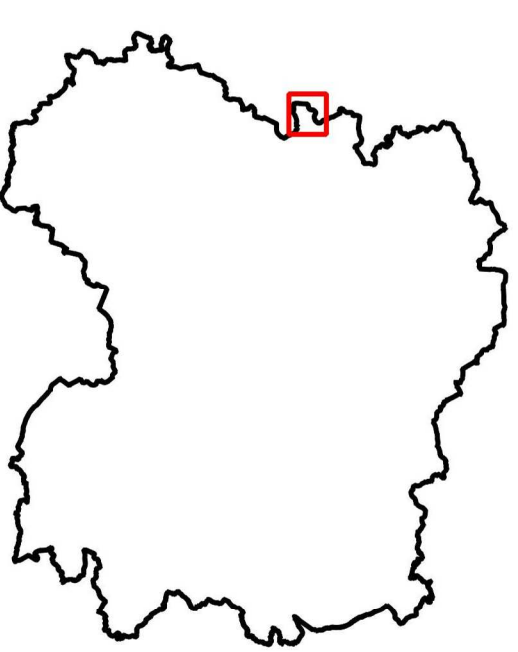
Date : 12.07.2019





# SAS BRIFFONTAINES

## LOCALISATION DES ZONES ENVIRONNEMENTALES



### Légende :

- Zones environnementales :
  - ZNIEFF de Type 1
- Aptitude des parcelles :
  - Hydromorphe
  - Exclu cours d'eau (cours d'eau 35 m et habitations 50 m)
  - Exclu (cours d'eau 10 m et habitations 15 m)
  - Exclu (bande enherbée)



Source : IGN Scan 25 2013

Dossier :  
S:\Cartes MapInfo\Etude collaborateurs\Etude Francois\SAS Briffontaines

Réfèrent : brissonj51d  
Date : 12.07.2019

